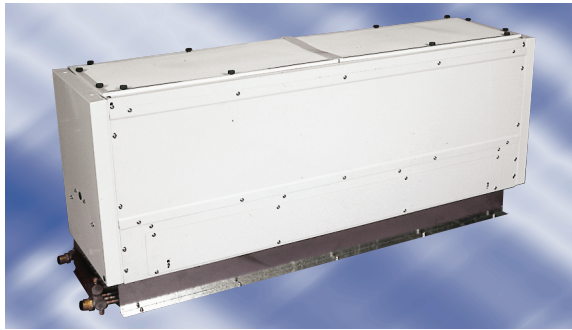


AT - Door Heater



Features: **Mounting heights of up to 4m**

Suitable for recessed and surface mounting

Can be mounted horizontally or vertically

Infinitely variable speed controller available as option

Units can work to external pressures of up to 200Pa

ENGINEERING SPECIFICATION

DESCRIPTION AND FEATURES

The units shall be manufactured from minimum 1.2mm galvanised steel. The overall size of each unit shall be as detailed on drawings issued for the particular model. Each model shall be tested before leaving the factory to ensure it will continue to meet the specified performance with a minimum of maintenance, throughout its life. All bearings and moving surfaces in contact shall operate without requiring lubrication. All electrical components shall be tested to ensure each unit and its associated wiring complies with the 16th edition of I.E.E..

CASINGS

The outer casing shall be manufactured from white PVC coated steel, with supporting end caps, finished in white stove enamel.

FILTER

The filter shall be manufactured from a fine woven mesh of galvanised steel, welded to a rigid galvanised steel frame, which can be vacuumed in position or removed for cleaning. The filter can be installed on site for horizontal or vertical access.

HEAT EXCHANGER

The coil assembly shall be manufactured from solid drawn copper tubes, mechanically expanded into accurately pre-formed collars in rippled plate type aluminium fins. They shall be built for multi-circuit operation complete with headers and be suitable for LPHW up to 95°C flow temperature.

FAN AND MOTOR ASSEMBLY

The fans shall be of the forward curved centrifugal type, with steel or aluminium impellers, statically and dynamically balanced. The impellers shall be driven by a direct shaft motor, suitable for use on a 220-240v / 1ph / 50Hz electrical supply. The motors shall be totally enclosed 4 pole permanent split phase capacitor type and shall be thermally protected and self resetting. The AT unit shall be supplied with a pre-tapped 3 speed motor and shall be factory set to operate on medium speed. This can be altered to high or low speed, by a small adjustment on site. A 3-speed switch and infinitely variable speed control are both available as optional extras.

DISCHARGE DUCTWORK

A connecting transition duct can be supplied as an extra (for assembly on site) which consists of a discharge plenum/bend fitted with air "splitters" to provide smooth laminar flow and even distribution of air from the discharge grille. [Full details on request]

GRILLES

Discharge and return air grilles are available at extra cost. The grilles are manufactured from heavy section anodised aluminium frame with either egg crate or linear bar core.

PERFORMANCE

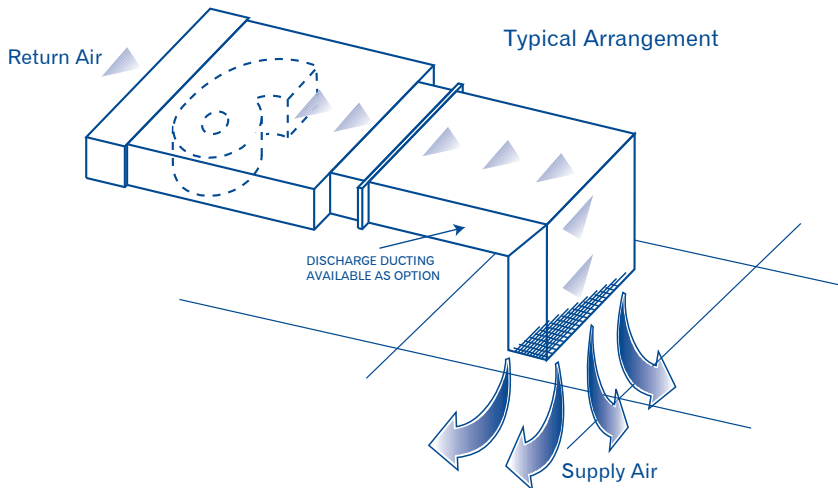
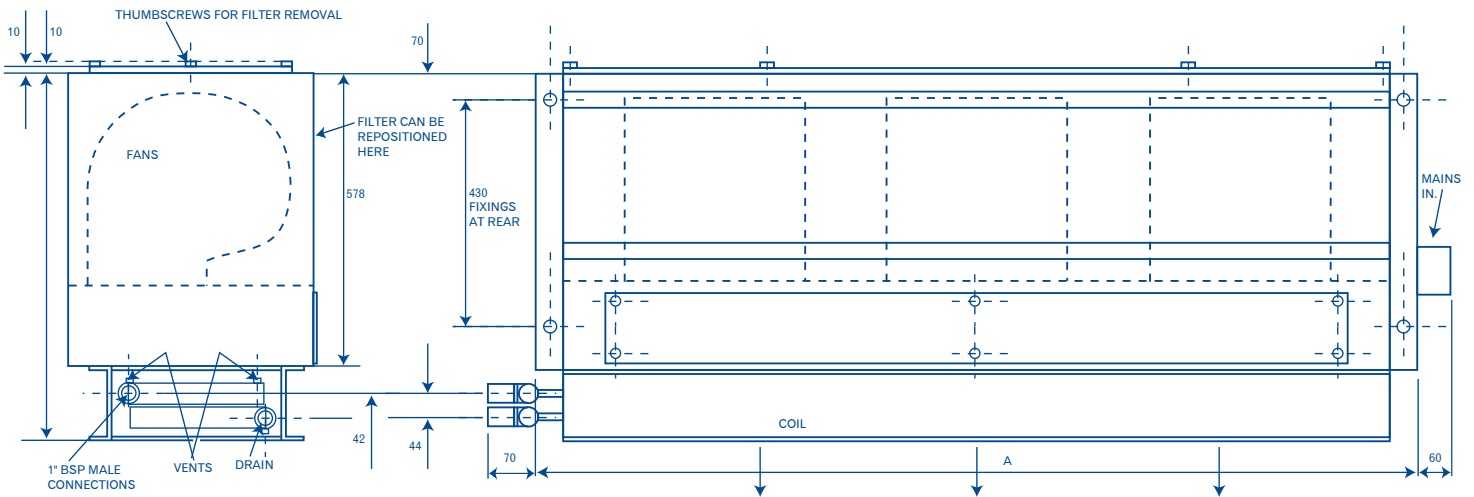
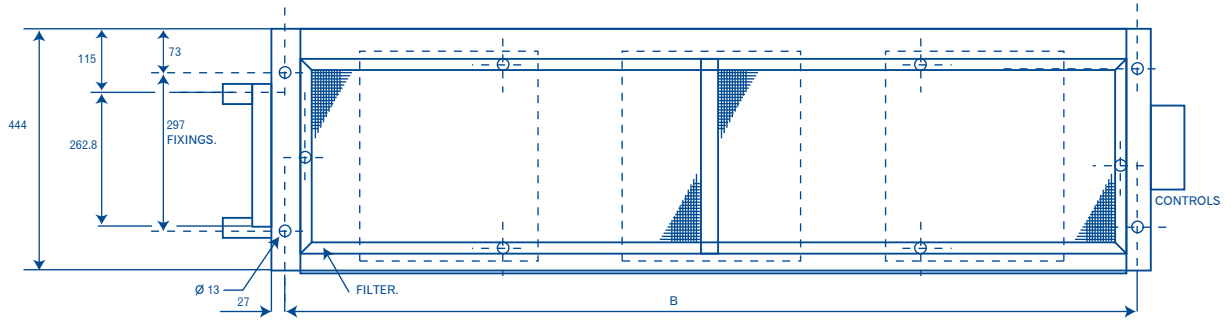
LPHW - STANDARD CAPACITY

	AT 1			AT 2		
	LOW	MED	HIGH	LOW	MED	HIGH
Fan Speed						
Air Volume m ³ /s	0.95	1.17	1.40	1.33	1.75	2.10
Heating Duty kW	36.5	42.5	46.6	51.4	62.5	70.7
Water Flow l/s		0.90			1.4	
Coil Pressure Drop kPa		28			37	
Starting Current Amps	6.6	9.8	14.4	9.9	14.7	21.6
Running Currents	5.0	5.7	7.4	7.0	9.0	12.2
Electrical Supply	230 V / 1ph / 50Hz					
Weight kg	80			110		

The above duties are based on LPHW at 82°C flow, with entering air at 20°C and an external static pressure of 50Pa.
 (Performance figures with up to 200Pa external static pressure are available on request).

Dimensions

	A	B
AT 1	1150	1096
AT 2	1650	1596



Diffusion Environmental Systems have a policy of continuous development.
 We therefore reserve the right to alter information contained in this leaflet, without prior notice.

CE Approved



Diffusion Environmental Systems, 47 Central Avenue, West Molesey, Surrey KT8 2QZ
 Tel: (+44) 020 8783 0033 Fax: (+44) 020 8783 0140 E-mail: sales@bensoenv.co.uk

